



Scotia Mine on Path to 2024 Production with CDN\$13M-\$41M Annual FCF

EDM Resources Inc. (EDM: TSX.V)

Mineral Resources and Mineral Reserves

Permitted Operation

Fully Built Mine and Mill

Tier 1 Jurisdiction (Nova Scotia, Canada)

Financed to Commercial Production

Low Life-of-Mine C1 Cash Cost



Forward Looking Statements

The information contained in this Presentation is derived from estimates made by the Company, information that has been provided to the Company by other parties, and otherwise publicly available information concerning the Company and does not purport to be all-inclusive or to contain all the information that an investor may desire to have in evaluating whether or not to make an investment in the Company. It is not intended to be relied upon as advice to investors or potential investors and does not take into account the investment objectives, financial situation or needs of any particular investor. No person has been authorized to give any information or make any representations other than those contained in this Presentation and, if given and/or made, such information or representations must not be relied upon as having been so authorized. The information and opinions contained in this Presentation are provided as at the date of this. This Presentation contains forward-looking information within the meaning of Canadian securities legislation and forward-looking statements within the meaning of the United States Private Securities Litigation Reform Act of 1995. This information and these statements, referred to herein as forward-looking statements, are not historical facts, and indicate the Company's expectations and are made as of the date of this Presentation and include without limitation, statements regarding discussions of future plans, projections, objectives, estimates and forecasts and statements as to management's expectations with respect to, among other things, the size and quality of the Company's mineral reserves and mineral resources, potential mineralization, and possible extensions of zones. In addition, estimates of mineral reserves and mineral resources may constitute forward looking statements to the extent they involve estimates of the mineralization that will be encountered if a property is developed. These forward-looking statements involve numerous risks and uncertainties, and actual results may vary from the expectations described herein. Important factors that may cause actual results to vary include without limitation, completion of certain transactions, receipt of any requisite approvals, changes in commodity and power prices, changes in interest and currency exchange rates, risks inherent in exploration results, timing and success, inaccurate geological and metallurgical assumptions (including with respect to the size, grade and recoverability of mineral reserves and resources), unanticipated operational difficulties (including failure of plant, equipment or processes to operate in accordance with specifications, cost escalation, unavailability of materials, equipment and third-party contractors, delays in the receipt of government approvals, industrial disturbances or other job action, and unanticipated events related to health, safety and environmental matters), political risk, social unrest, and changes in general economic conditions or conditions in the financial markets. In making the forward-looking statements in this Presentation, the Company has applied several material assumptions, including without limitation, the assumption that any additional financing needed will be available on reasonable terms.

Additional factors that could cause actual results to differ materially from those expressed or implied by such forward-looking statements include, among other factors: (1) weak commodity prices and general metal price volatility, which in the past have fluctuated widely and which could affect the profitability of the Company's operations and financial condition; (2) the state of the global economy and economic and political events, including the deterioration of the global capital markets, affecting metal supply and demand and economic and political events affecting metal supply and demand; (3) risks related to recent market events and conditions including the Company's access to credit and capital; (4) securing, maintaining and the nature of regulatory permits and approvals and the costs of complying with environmental, health and safety laws and regulations necessary to the Company's current and anticipated operations; (5) the ongoing availability and cost of operational inputs including expertise, labour, reagents, water, power and equipment; (6) fluctuations in ore grade, operating costs or ore tons milled; (7) geological, technical, mining or processing problems; (8) fluctuations in foreign currency exchange rates, particularly the Canadian dollar/U.S. dollar exchange rate (9) the advice the Company has received from its consultants and advisors relating to matters such as mineral resource and mineral reserve estimates, metallurgy, permitting and environmental matters is reliable and correct and, in particular, that the models, dilution strategies and mining recovery estimates used to calculate mineral resources and mineral reserves are appropriate and accurate; (10) risks involved in current or future litigation or regulatory proceedings; (11) future changes that may occur in the life-of-mine plan and/or the ultimate pit design; (12) risks related to the Company's ability to successfully produce zinc profitably; (13) uncertainty in the Company's ability to fund and risks related to the availability of funding the development of its mineral properties or the completion of further development and exploration programs; (14) risks related to differences between US and Canadian practices for reporting resources and reserves; (15) risks related to future drilling results which may not produce reserves and resources that can be mined or processed profitably; (16) risks related to the Company's mineral reserves and mineral resources figures being estimates based on interpretations and assumptions which may result in less mineral production under actual conditions than is currently estimated (17) risks related to the inherently dangerous activity of mining, including conditions or events beyond the Company's control; (18) risks related to the Company's land reclamation requirements which may be burdensome; (19) uncertainty regarding future requirements to fund additional reclamation work during the course of the Company's mining activities; (20) uncertainty relating to the Company's ability to attract and maintain qualified management to meet the needs of its anticipated growth, and risks relating to its ability to manage growth effectively; (21) risks related to the Company's mineral properties being subject to prior unregistered agreements, transfers, or claims and other defects in title; (22) risks related to the Company's history of losses, which may continue in the future; (23) risks related to increased competition that could adversely affect the Company's ability to attract necessary capital funding or acquire suitable properties for mineral exploration and development in the future; and (24) risks related to the Company's officers and directors becoming associated with other natural resource companies which may give rise to conflicts of interests. This list is not exhaustive of the factors that may affect any of the Company's forward-looking statements. The Company cannot assure you that any of these assumptions will prove to be correct.

The words "guidance," "expect," "anticipate," "estimate," "may," "will," "should," "intend," "believe," "target," "budget," "plan," "projection" and similar expressions are intended to identify forward-looking statements. Information concerning mineral reserve and mineral resource estimates also may be considered forward-looking statements, as such information constitutes a prediction of what mineralization might be found to be present if and when a project is actually developed. These factors

should be considered carefully, and readers should not place undue reliance on the Company's forward-looking statements. The Company believes that the expectations reflected in the forward-looking statements, including future-oriented financial information, contained in this Presentation and the documents incorporated by reference are reasonable, but no assurance can be given that these expectations will prove to be correct. In addition, although the Company has attempted to identify important factors that could cause actual actions, events or results to differ materially from those described in forward-looking statements, including future-oriented financial information, there may be other factors that cause actions, events or results not to be as anticipated, estimated or intended. The Company undertakes no obligation to disclose publicly any future revisions to forward-looking statements, including future-oriented financial information, to reflect events or circumstances after the date of this Presentation or to reflect the occurrence of unanticipated events, except as expressly required by law. Additionally, the forward-looking statements, including future-oriented financial information, contained herein are presented solely for the purpose of conveying our reasonable belief of the direction of the Company and may not be appropriate for other purposes.

The risks and assumptions are described in more detail in the EDM Resources Inc. (formerly ScoZinc Mining Ltd.), audited financial statements and MD&A for the year ended December 31, 2022 under the Company's profile on the SEDAR website at www.sedar.com. The Company does not assume the obligation to revise or update these forward-looking statements after the date of this Presentation or to revise them to reflect the occurrence of future unanticipated events, except as may be required under applicable securities laws.

National Instrument 43-101 Compliance

Unless otherwise indicated, the Company has prepared the technical information in this Presentation ("Technical Information") based on information contained in the technical reports, news releases, material change reports and financial statements and quarterly and annual consolidated financial statements and management discussion and analysis (collectively the "Disclosure Documents") available under the EDM Resources Inc. company profile and available on SEDAR at www.sedar.com. Some of the information in this Presentation has been updated for events occurring subsequent to the date of the technical reports. Each Disclosure Document was prepared by or under the supervision of a qualified person (a "Qualified Person") as defined in National Instrument 43-101 – Standards of Disclosure for Mineral Projects of the Canadian Securities Administrators ("NI 43-101"). Technical information in this presentation is based on the following NI 43-101 – compliant technical report: 1) The 2020 Mineral Resource Estimation for Scotia Mine dated 22nd March 2021 entitled "Gypsum Resource Estimation Update of the Mineral Resources at the Scotia Mine" ("2020 MRE") prepared for the Company by MineTech International Limited; 2) The 2020 Preliminary Feasibility Study for the Scotia Mine dated 6th July 2020 entitled "Pre-Feasibility Study for the Scotia Mine, Nova Scotia, Canada" ("2020 PFS") prepared for ScoZinc Mining Ltd. by SRK Consulting (U.S.), Inc., Ausenco Engineering Canada Inc., Terrane Geoscience Inc., and MineTech International Limited; 3) The 2021 Preliminary Feasibility Study Update for the Scotia Mine dated 16th November 2021 entitled "Scotia Mine Pre-Feasibility" ("2021 PFS") prepared for the Company by MineTech International Limited. Readers are encouraged to review the full text of the Disclosure Documents which qualifies the Technical Information. Readers are advised that Mineral Resources that are not Mineral Reserves do not have demonstrated economic viability. The Disclosure Documents are each intended to be read as a whole, and sections should not be read or relied upon out of context. The Technical Information is subject to the assumptions and qualifications contained in the Disclosure Documents.

Information Concerning Mineralization and Resources

Unless otherwise indicated, all resource estimates contained in this presentation have been prepared in accordance with NI 43-101 and the Canadian Institute of Mining, Metallurgy and Petroleum Classification System in compliance with Canadian securities laws, which differ from the requirements of United States securities laws. Without limiting the foregoing, this presentation uses the terms "measured resources", "indicated resources" and "inferred resources". United States investors are advised that, while such terms are recognized and required by Canadian securities laws, the United States Securities and Exchange Commission ("SEC") does not recognize them. Under United States standards, mineralization may not be classified as a "reserve" unless the determination has been made that the mineralization could be economically and legally produced or extracted at the time the reserve determination is made. United States investors are cautioned not to assume that all or any part of measured or indicated resources will ever be converted into reserves. Further, inferred resources have a great amount of uncertainty as to their existence and as to whether they can be mined legally or economically. It cannot be assumed that all or any part of the inferred resources will ever be upgraded to a higher category. Therefore, United States investors are also cautioned not to assume that all or any part of the inferred resources exist, or that they can be mined legally or economically. Disclosure of contained ounces is permitted disclosure under Canadian regulations; however, the SEC normally only permits issuers to report resources as in place tonnage and grade without reference to unit measures. Accordingly, information concerning descriptions of mineralization and resources contained in this presentation may not be comparable to information made public by United States companies subject to the reporting and disclosure requirements of the SEC.

Mark Haywood, B.Eng, LL.B, a Qualified Person as defined by NI 43-101, supervised the preparation of and verified and approved the Technical Information contained in this presentation. All dollars noted are CAD or C\$, unless otherwise indicated.

Neither the TSX Venture Exchange nor its Regulation Services Provider (as that term is defined in the policies of the TSX Venture Exchange) accepts responsibility for the adequacy or accuracy of this presentation.

Transformational Company Growth in Past 3 Years

TSX.V Listed Junior Mining Company

Permitted and Financed Mine in Nova Scotia (Zn/Pb/Gp)

Scotia Mine Pre-tax NPV (8%) of CDN\$174M

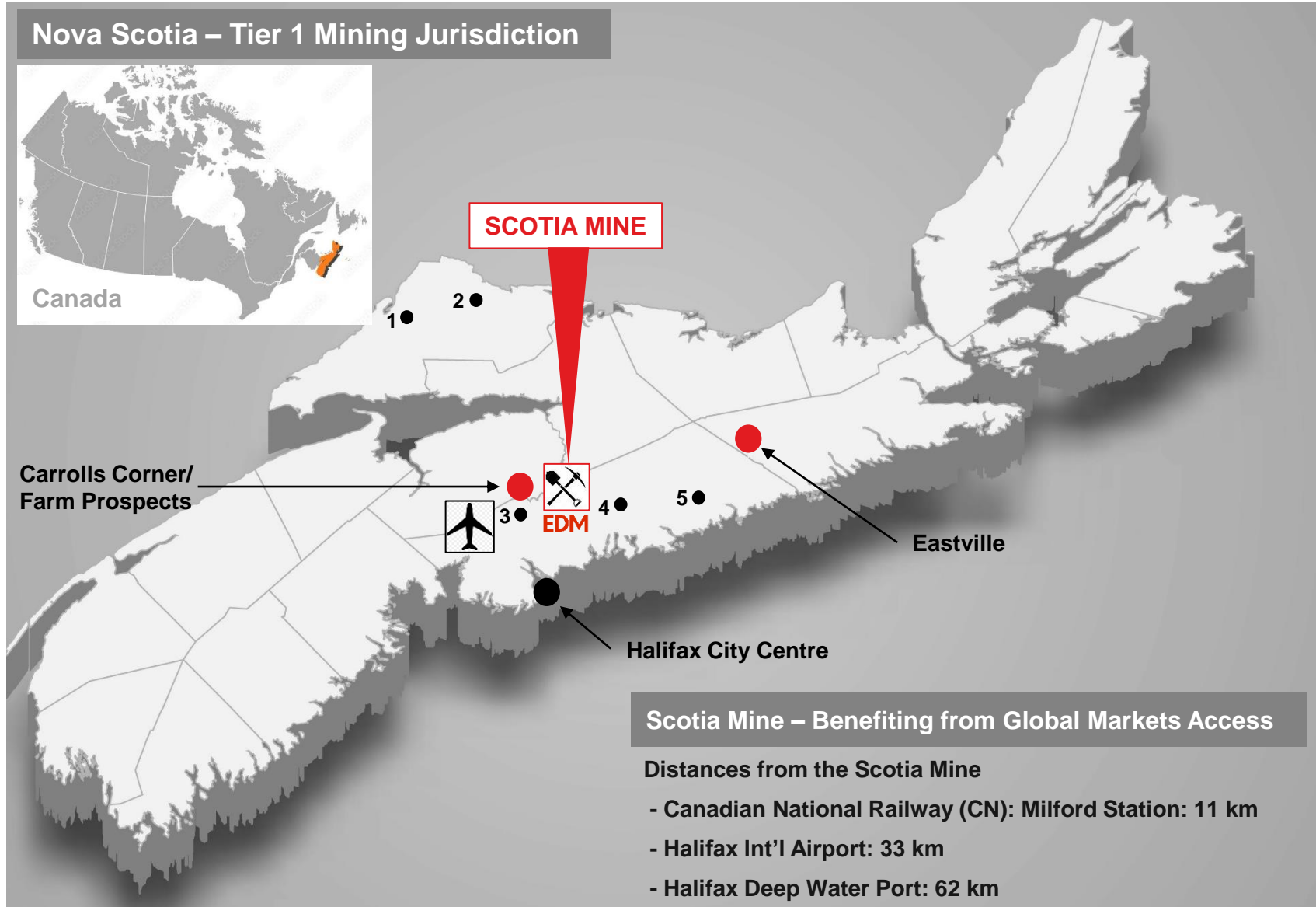
Path to Commercial Production In 2024

Near Term Free Cash Flow of CDN\$13M-\$41M Per Year

Positioned for Early & Sustained Dividends

Trading at 10% of NAV

Nova Scotia – Tier 1 Mining Jurisdiction




*For more details on our Nova Scotia based assets, please visit www.EDMResources.com/projects

1. Compass Minerals Canada; 2. K+S Windsor Salt; 3. National Gypsum Canada; 4. Atlantic Mining (St. Barbara); 5. Maritime Dufferin Gold



Our Path to Production

	MINING	14 Year Conventional Open-Pit Operations
	PROCESSING	Crushing, Grinding, Flotation, De-watering, Transport
	FINANCE	Project Finance of US\$24M (~CDN\$32M) in Place with Offtake Partner
	SALE	100% Offtakes for Zinc/Lead/Gypsum
	PRODUCTION	Commercial Declaration Expected 2024
	CASHFLOW	EBITDA CDN\$13M-\$41M Per Annum for 14 Years

PRODUCTION HIGHLIGHTS

Processing Rate: 1Mt/y (2,700t/d)
Mining Rate: ~14Mt/y (First 5 Years)
Payables: 35Mlbs/y Zinc, 15Mlbs/y Lead, 430Kt/y Gypsum
Life of Mine Strip Ratio: 7.1

ECONOMIC HIGHLIGHTS

Capital Cost: CDN\$30.8M
C1 Cash Cost: US\$0.50/lb
Commodity Prices: US\$1.22/lb Zinc, US\$1.04/lb Lead
US\$8.60/t Gypsum
NPV (8%): CDN\$174M
IRR (Pre-Tax): 69%

PROJECT FINANCE

Project Finance of US\$24M (~CDN\$32M) in Place with Offtake Partner

Commodity Market & Drivers

ZINC	<p>Zinc Prices increased since 2021 PFS Expected to trend back above US\$1.50/lb Worldwide stockpile shortage and lack of mines</p>
LEAD	<p>Lead Prices decreased since 2021 PFS Expected to trend back towards US\$1.00/lb</p>
GYPSUM	<p>Crude Gypsum prices increasing from 2021 PFS Increased industrial use Expected to continue upward trend towards US\$9.80/t</p>
EXCHANGE RATE	<p>CAD:USD exchange rate decreased since 2021 PFS Exchange rate expected to remain ~0.75</p>

Upcoming Planned Catalysts

<p>2024 (Year1)</p>	<p>Open-Pit Mining ramp up to 1.2Mt per month</p>	<p>EBITDA FORECAST</p> <p>Year 1 to 3: CDN\$60M</p> <p>Year 4 to 6: CDN\$92M</p> <p>Year 7 to 9: CDN\$97M</p> <p>Year 10 to 14: CDN\$137M</p>
	<p>Conventional Processing ramp up to 2,700t per day</p>	
	<p>Full Commercial Production (Declaration)</p>	
	<p>Annual Payables: 37.1Mlbs Zinc 12.8Mlbs Lead 413Kt Gypsum</p>	
	<p>EBITDA ~CDN\$23M</p>	



SHARES ISSUED	24.1M (Fully Diluted 30.5M)
MARKET CAPITALIZATION	~CDN \$8.6M ⁽¹⁾
NAV	CDN\$174M (8%) (Pre-tax)
P/NAV Multiple	Trading Below 10% of NAV
RE-RATING POTENTIAL	40% to 50% of NAV (Comparable Producers)

(1) As at June 15, 2023

EDM RESOURCES INC.

Head Office:

1959 Upper Water Street
Suite 1301, Tower 1
Halifax, Nova Scotia
Canada, B3J 3N2

Site Office:

#15601 Highway 224
Cooks Brook
Nova Scotia
Canada, B0N 2H0

Telephone:

(+1) 902 482 4481

Email:

info@EDMresources.com

Web Site:

www.EDMresources.com



Tier 1 Canadian Turnkey Operation

EDM
EXPLORE • DEVELOP • MINE

Additional Information

Directors and Management

Management

Mark Haywood

President & CEO, Director

- > +25 years of mining and development experience, open pit & underground operations
- > Previous senior roles with Anglo Gold Ashanti, Goldfields, IAMGold, Ivanhoe, BHP and Placer Pacific. Previous CEO & Director of TSX and TSX.V companies since 2008. 15 years of mine construction & operations
- > Degrees in Mining Engineering (Hons) and Law

Kevin Farrell

Interim CFO

- > +30 years of leadership in finance, M&A activities, financial reporting and business transformations
- > CPA and ICD.D designation from the Rotman School of Management, by University of Toronto
- > Previous experience and mandates with Anglo American, Barrick Gold, Uranium One, Gabriel Resources, Kirkland Lake Gold, Noront Resources and Sumatra Copper & Gold

Simion Candrea

Vice President

- > +15 years of investment banking and financial services experience in Canada and Europe, working with ABN AMRO Bank, RBC Dominion Securities, Jennings Capital Inc. and AltaCorp Capital Inc.
- > Degree in Business and Management

Directors

Ashwath Mehra

Chairman

- > 30 years of financing, building and trading in Mining and Metals
- > Former Senior Partner at Glencore International AG, where he ran the Ni and Co businesses, and former CEO and co-owner of MRI Trading AG
- > BSc Philosophy and Economics (London School of Economics and Political Science)

Mark Haywood

President & CEO, Director

- > See above

Mark Billings

Director

- > Currently President of Auxico Resources Canada Inc., and a director of St-Georges Eco-Mining Corp., Fancamp Exploration Ltd. and Kintavar Exploration Inc.
- > MBA Harvard Business School, Chartered Financial Analyst

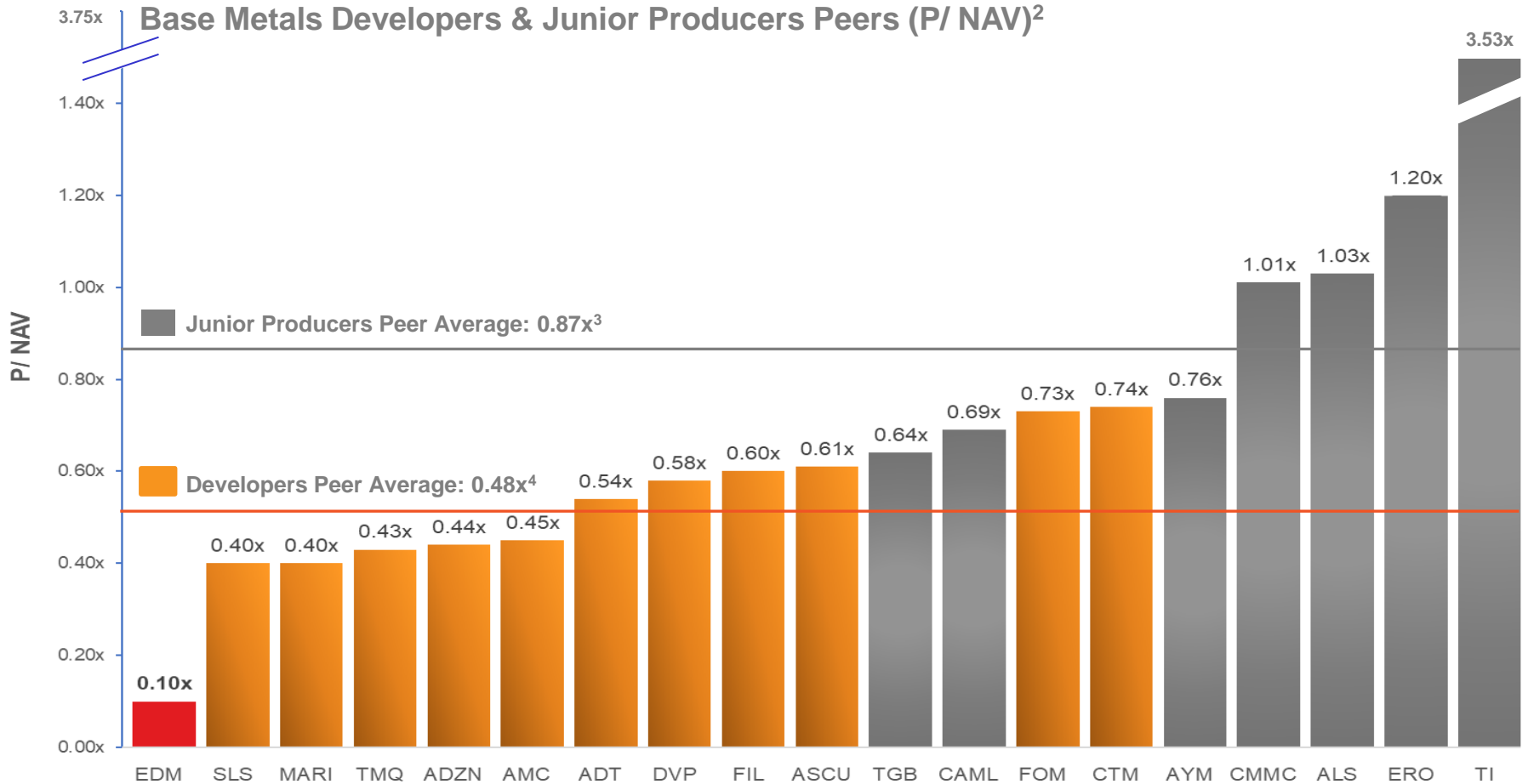
Rajesh Sharma

Director

- > Currently President & CEO of Fancamp Exploration Ltd., Former Executive at Investissement Quebec, Black Ginger 461, & Tata Steel
- > Management and Engineering Degree. Institute of Corporate Directors (ICD.D)

Base Metals Developers & Producers

EDM: Highly Undervalued on P/ NAV Basis, Trading Less Than 10% of After-Tax (8%) NAV¹



(1) Reference is made to EDM's November 16, 2021, updated PFS news release

(2) As of January 2023

(3) Junior Producers Included: Taseko, Central Asia Metals, Atalaya, Copper Mountain, Altius Minerals, Ero Copper; Titan Mining not included in the averages

(4) Developers Included: Solaris Res, Marimaca Copper, Trilogy Metals, Adventus, Arizona Metals, Adriatic Metals, DEVELOP Global, Filo Mining, Arizona Sonoran, Foran Mining & Centaurus Metals

Source: Canaccord Genuity & National Bank Financial estimates, FactSet, Street Research

Friendly, First World Jurisdiction with World Class Infrastructure & Skilled Workforce

Nova Scotia Has Over 300 Years of World Class Experience in the Mining Sector

Extensive Highly Developed Infrastructure:

- ✓ Roads, Railways, Mobile Communications

Global Markets Access:

- ✓ International Air Service And Deep-water, Ice-free Ports

Modern Geoscience Database Expertise:

- ✓ Secure Mineral Tenure System, Highly Developed Models of Education, Training and Research

Nova Scotia Boasts a Streamlined Environmental Assessment:

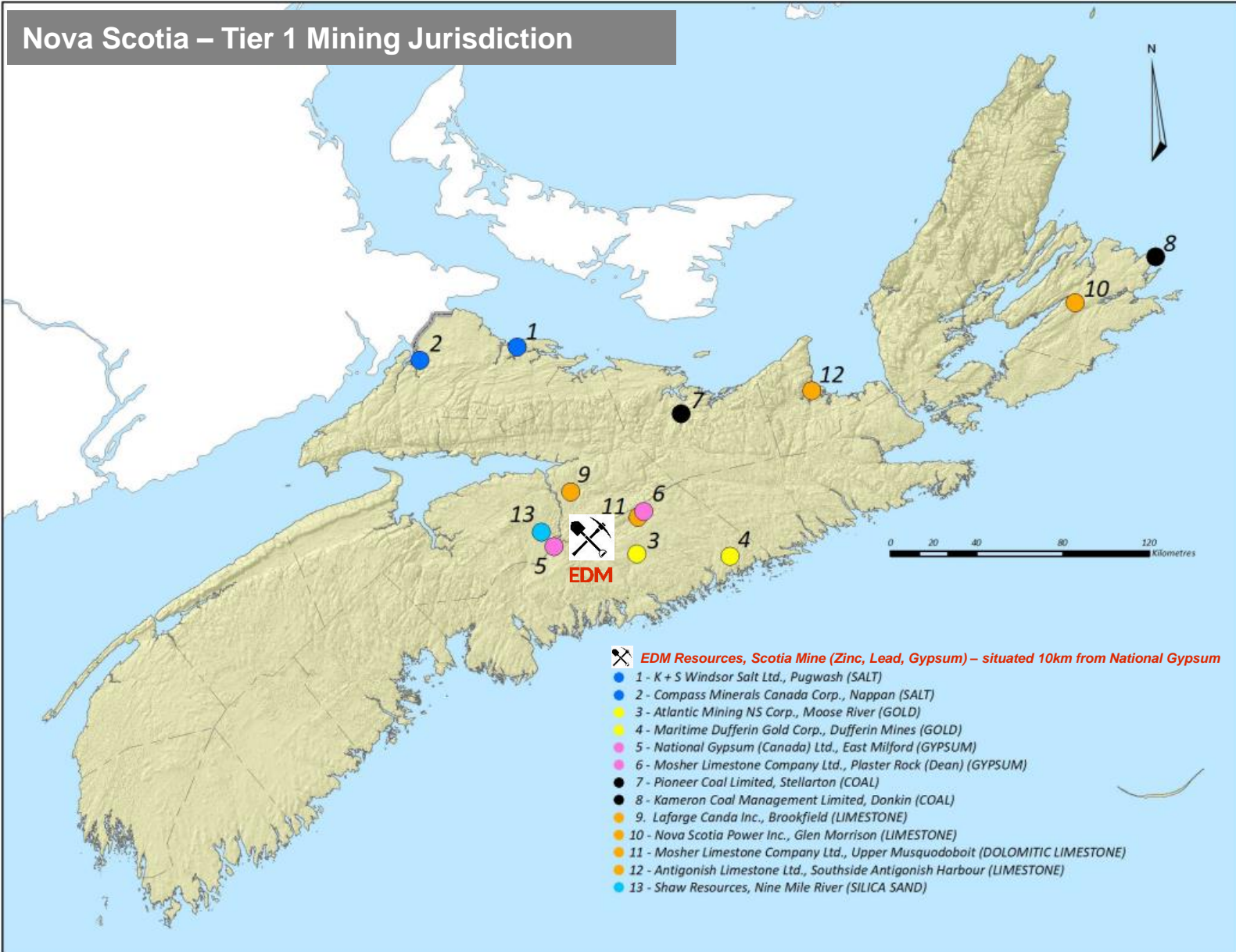
- ✓ One Window Regulatory Process Providing Clarity and Timely Service to Mining Companies

Highly Skilled Workforce:

- ✓ Nova Scotia Employs Over 3,000 People in the Mining Industry

Main Metals & Materials Mined:

- ✓ Gold, Zinc, Gypsum, Salt, Coal
- ✓ Nova Scotia Accounts for 80% of Canada's Total Gypsum Production
- ✓ Scotia Mine has 5.2 Mt of Gypsum Reserves



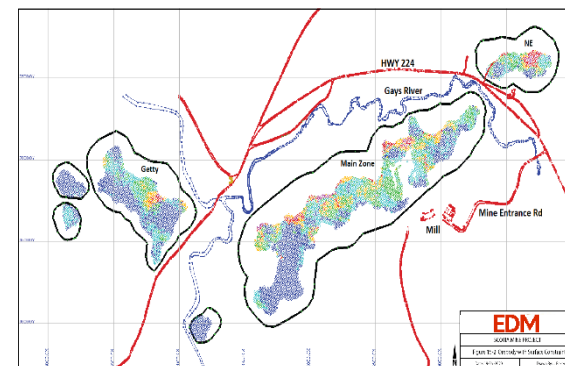
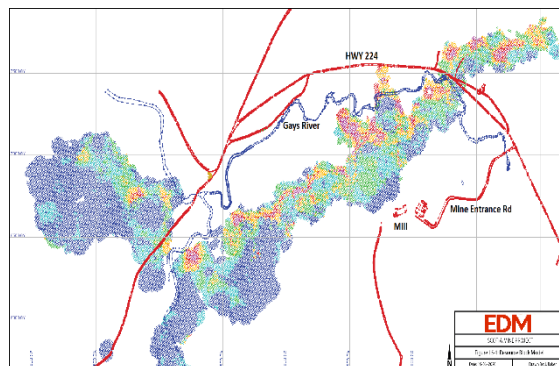
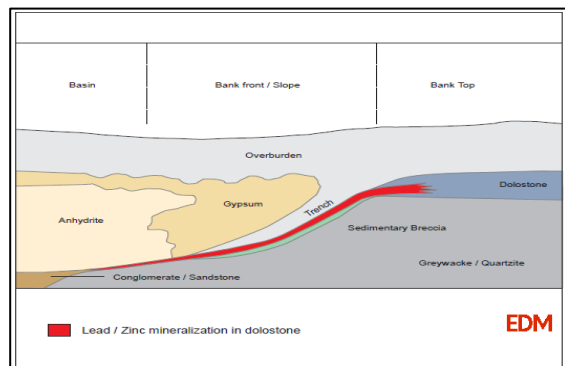
NI 43-101 Mineral Resource Base with Potential to Increase Along Strike

Classification	Tonnage (kt)	Zinc Grade (%)	Lead Grade (%)	Zinc Equivalent Grade (%)	Gypsum Tonnage (kt)	Gypsum (%)
Measured	4,320	2.57	1.32	3.83	1,530	92.8
Indicated	21,130	1.75	0.92	2.64	3,650	91.4
Total Measured + Indicated	25,450	1.89	0.99	2.84	5,180	91.8
Inferred	5,010	1.50	0.66	2.13	790	91.2

Source: MineTech 2021

Notes:

- (1) Mineral Resources are not Mineral Reserves and do not have demonstrated economic viability. There is no certainty that any part of the Mineral Resources estimated will be converted into Mineral Reserves
- (2) Determination of reasonable prospects of eventual economic extraction was based on assumed prices for Zinc of US\$1.35/lb, and for Lead of US\$1.14/lb, a Zinc recovery of 86% and a Lead recovery of 93%, mining and processing costs varying by zone, and pit slopes of 45 degrees in rock and 22 degrees in overburden
- (3) Near surface resources are reported based on a Zinc equivalent (“ZnEq”) grade of 0.90% and a Gypsum grade of 80%. The ZnEq grade incorporates Zinc and Lead sales costs of US\$0.19/lb and US\$0.11/lb respectively, and a 2% royalty to the Government of Nova Scotia
- (4) Numbers in the table have been rounded to reflect the accuracy of the estimate and may not sum due to rounding, and
- (5) The NI 43-101 Technical Report dated 22nd March 2021 (the “2021 MRE”) was prepared by MineTech International Limited (“MineTech”)



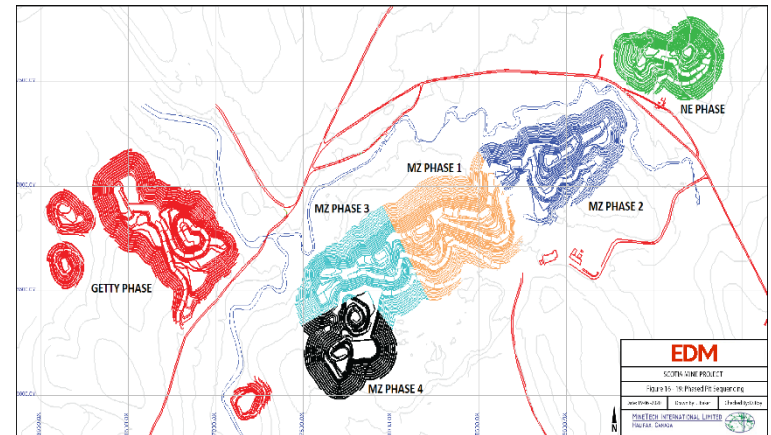
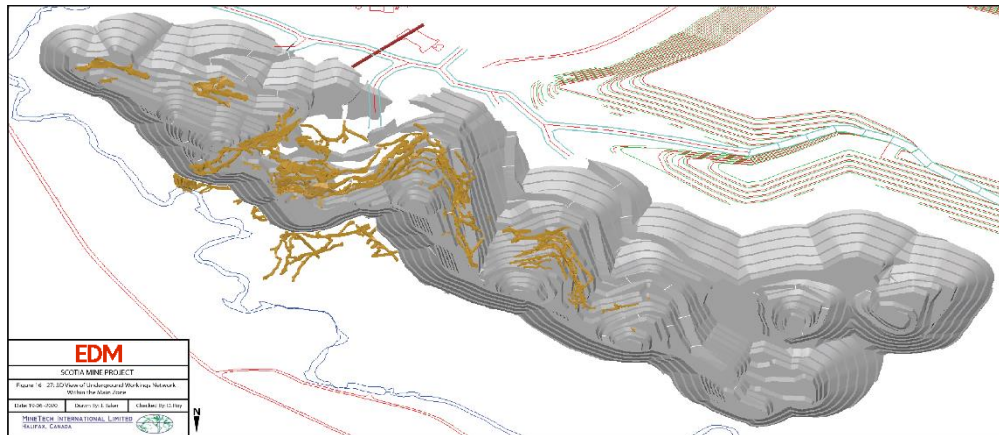
NI 43-101 Mineral Reserve Provides Long Mine Life & Robust Economics

Classification	Tonnage (t)	Zinc Grade (%)	Lead Grade (%)	Zinc Equivalent Grade (%)	Gypsum Tonnage (t)	Gypsum Grade (%)
Proven	3,370,000	2.46	1.21	3.62	1,530,000	92.8
Probable	10,290,000	1.88	1.07	2.91	3,650,000	91.4
Total	13,660,000	2.03	1.10	3.09	5,180,000	91.8

Source: MineTech 2021

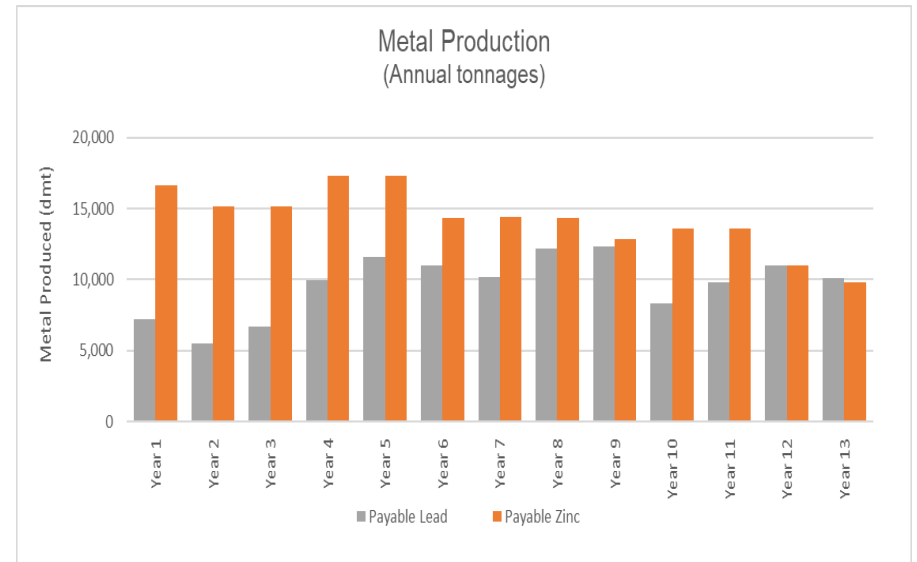
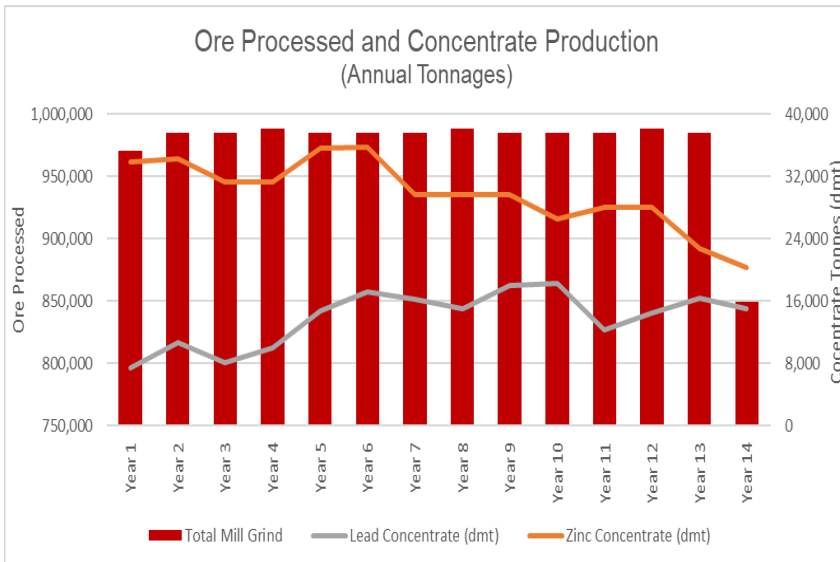
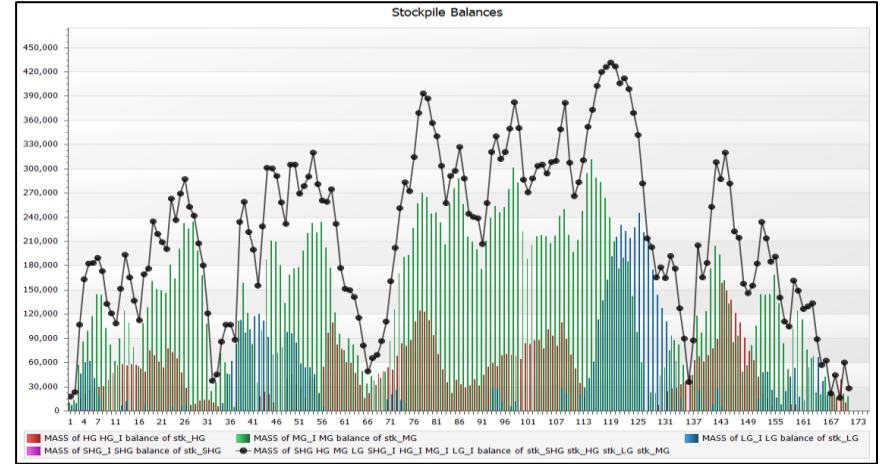
Notes:

- (1) Mineral Reserves were prepared by MineTech International Limited as independent Qualified Persons to NI 43-101 standards
- (2) The Base Metal Mineral Reserves are as of 6 July 2020 and based on a design cut-off grade of 1.5% ZnEq grade. Cut-off grades are based on a Zinc metal price of US\$1.10/lb, recovery of 89%, a Lead metal price of US\$0.95/lb, and mining recovery of 92%. Average unplanned dilution and mining recovery factors of 12% and 92%, respectively, are assumed
- (3) 2021 Gypsum Mineral Reserves are as of 16 November 2021 and based on a non-binding offtake agreement. The LOI has been reviewed and approved by MineTech International to satisfy the requirements for converting Gypsum resources into Gypsum reserves
- (4) The NI 43-101 Technical Report dated 16th November 2021 (the "2021 PFS") was prepared by MineTech International Limited ("MineTech")

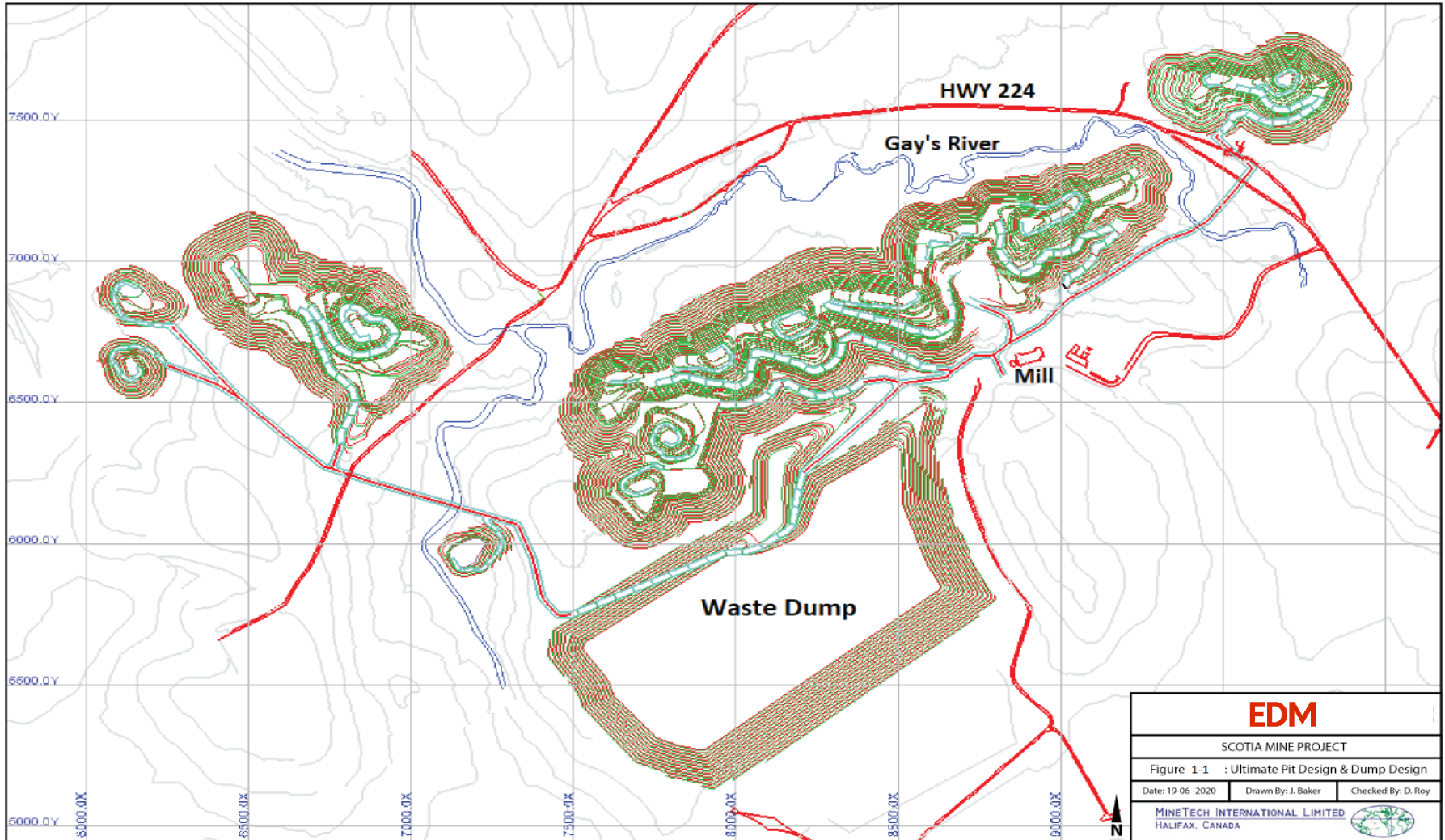


Mining, Processing and Concentrate Production for a 14-year Mine Life

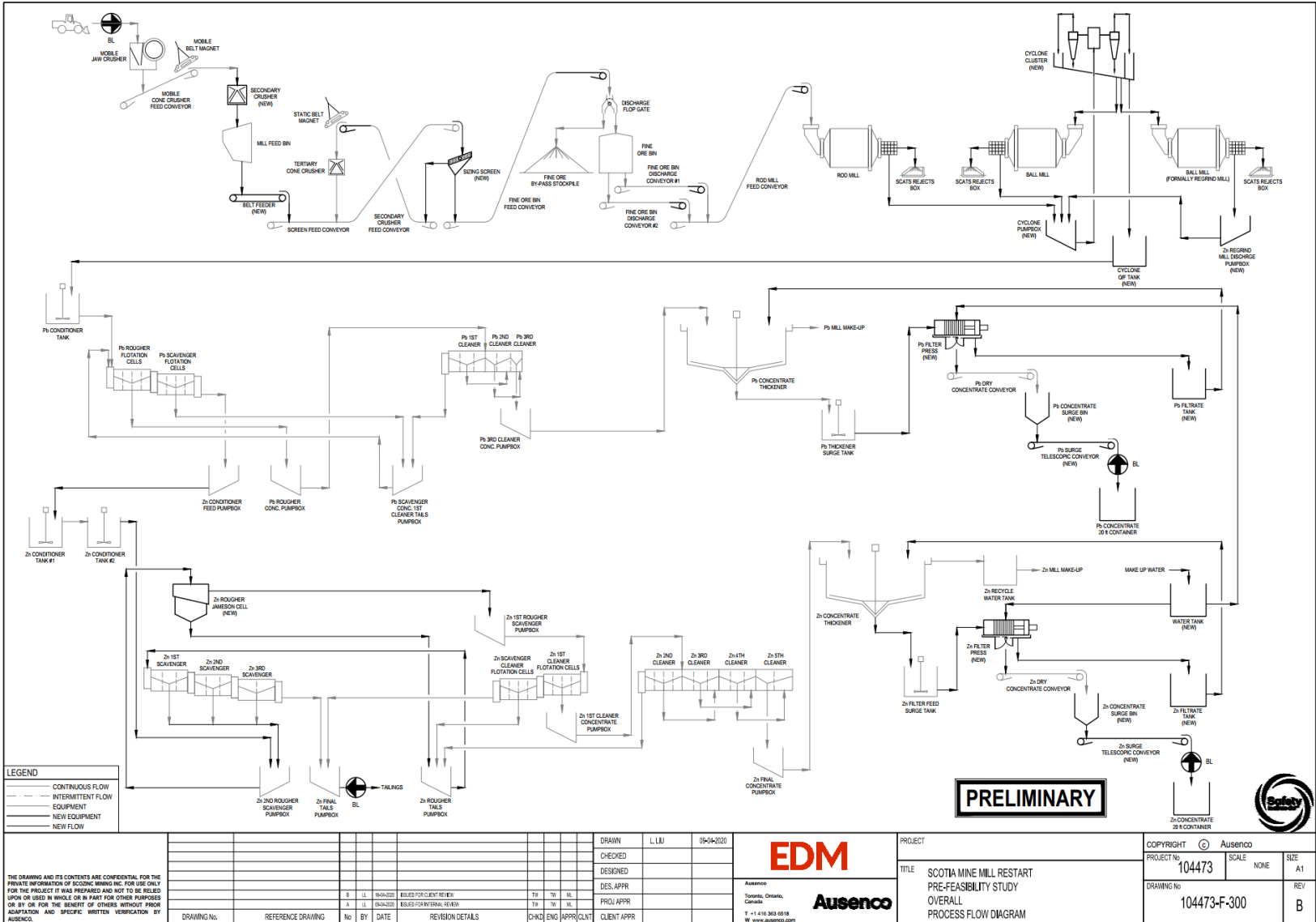
Production Schedule (LOM)	Mining	Processing	Recovered Metal	Payable Metal
Total Ore	13.6 Mt	13.6 Mt		
Zinc	2.03% ore	57% conc	238 Kt	202 Kt
Lead	1.10% ore	71% conc	138 Kt	131 Kt
Gypsum	5.2Mt ore	91.2%		
Strip Ratio	7.1			



Ultimate Pit and Stockpile Designs

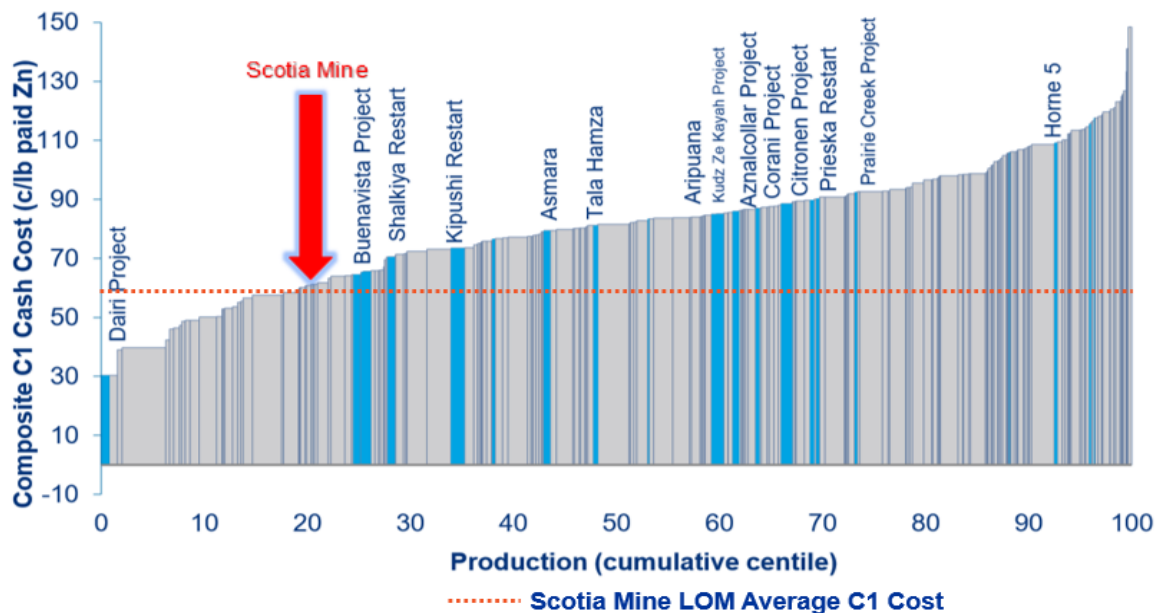


Proven Processing Methods and Fully Built & Permitted Facility



Low Forecast Cash Costs with Potential to be One of the Lowest Cost Producers

Major Cost Centre	Life of Mine Total Cost (C\$)	Life of Mine Unit Cost (C\$)
Mining	\$311 M	\$22.78
Processing	\$154 M	\$11.29
Gypsum Processing	\$0.6 M	\$0.12
SG & A	\$31 M	\$2.27
TC & Freight	\$219 M	\$16.09
Total	\$715 M	\$52.56/t milled
	C1 Cash Cost	US\$0.50/lb



Robust Economics with Low Capex, Large NPV and High IRR

Pre-Tax Net Present Value (Discount Rate 5% or 8%)	\$225 M / \$174 M
Pre-Tax Internal Rate of Return	69%
After-Tax Net Present Value (Discount Rate 5% or 8%)	\$165 M / \$128 M
After-Tax Internal Rate of Return	65%
EBITDA (Annual Average)	\$18 M
Payback Period (Years)	1.3
Pre-Production CAPEX (incl. \$2.7M contingency)	\$30.6 M
Metal Production Zinc (5 Year Annual Average)	35M lbs
Metal Production Lead (5 Year Annual Average)	15M lbs
Zinc Concentrate Grade (LOM Average)	57%
Lead Concentrate Grade (LOM Average)	71%
Processing Throughput Rate (Tonnes Per Day)	2,700
Life of Mine ("LOM") (Years)	14.3 Years
Ore Reserves Mined (LOM Total)	13.66 Mt
Zinc Ore Grade (LOM Average)	2.03% Zn
Lead Ore Grade (LOM Average)	1.10% Pb
Gypsum Reserves Mined (LOM Total)	5.18 Mt
Gypsum Grade (LOM Average)	91.8%
Net Revenue After Royalty & Treatment Charges	\$875 M
Operating Cash Flow Before Taxes	\$357 M
C1 Costs Over LOM¹	US\$0.50/lb
Total Operating Cost (Per Tonne Milled LOM)	\$52.56/t
All-In-Sustaining-Cost (ZnEq)^{1, 2}	US\$0.52/lb
Zinc Price (LOM Average)	US\$1.22/lb
Lead Price (LOM Average)	US\$1.04/lb
Gypsum Crude Prices (LOM Average)	US\$8.60/t
Foreign Exchange Rate (CAD:USD)	0.80

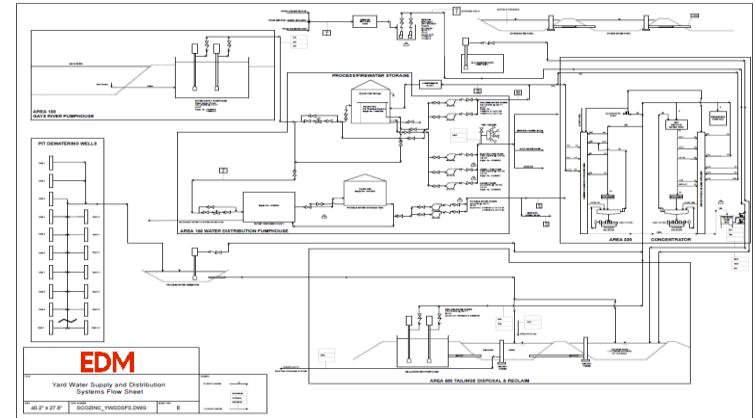
All dollar amounts are expressed in Canadian Dollars unless otherwise noted

(1) After Lead credits deducted

(2) All-In-Sustaining-Costs ("AISC") are C1 Costs plus Sustaining Capital and Financing Costs

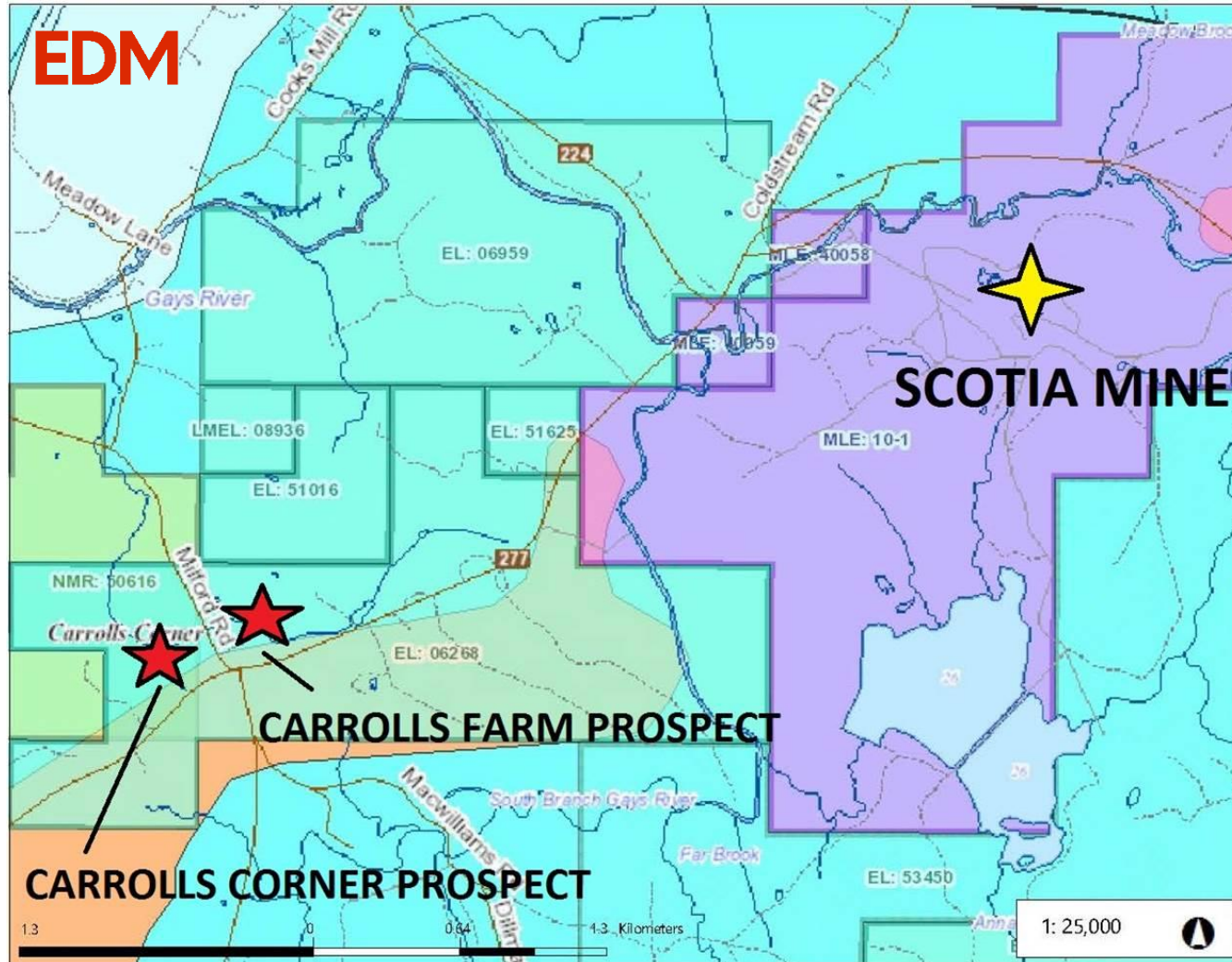
Infrastructure in Place for Commercial Production

- ✓ Mineral Leases:
 - ❑ Environmental & Operational permits
- ✓ Mineral Processing
 - ❑ Processing plant consisting of crusher, rod and ball mills, flotation tanks, compressors, offices, metallurgical laboratories, tailings storage facility in good condition
- ✓ Mining:
 - ❑ Dewatering wells, haul roads
 - ❑ Waste stockpiles
- ✓ Maintenance
 - ❑ Workshops, warehouses, fuel depot
 - ❑ Large equipment and parts inventory
- ✓ Supporting infrastructure:
 - ❑ Access: all season highway access
 - ❑ Power: Nova Scotia grid
 - ❑ Water: nearby river and deep wells
 - ❑ Port: all season deep water ports
- ✓ Asset replacement estimated value: ~C\$100M



Near-Mine Exploration Upside

Adjoining Mineral Deposits and Nearby Exploration Licences Offer Longer-term Mill Feed⁽¹⁾



(1) For further information, refer to the 2020 PFS NI 43-101 Technical Report on the Company's website and at the Company's SEDAR profile, dated July 7, 2020

TSX Venture Trading

Trading Symbol	EDM
Share Price (June 15, 2023)	C\$0.36
52-Week Low	C\$0.30
52-Week High	C\$0.75
Total Common Shares Issued	24.1M
Market Capitalization	C\$8.6 M

Shareholder Base (est.)

Institutional	21%
Insiders	25%
Retail	54%

Recent Financing Details

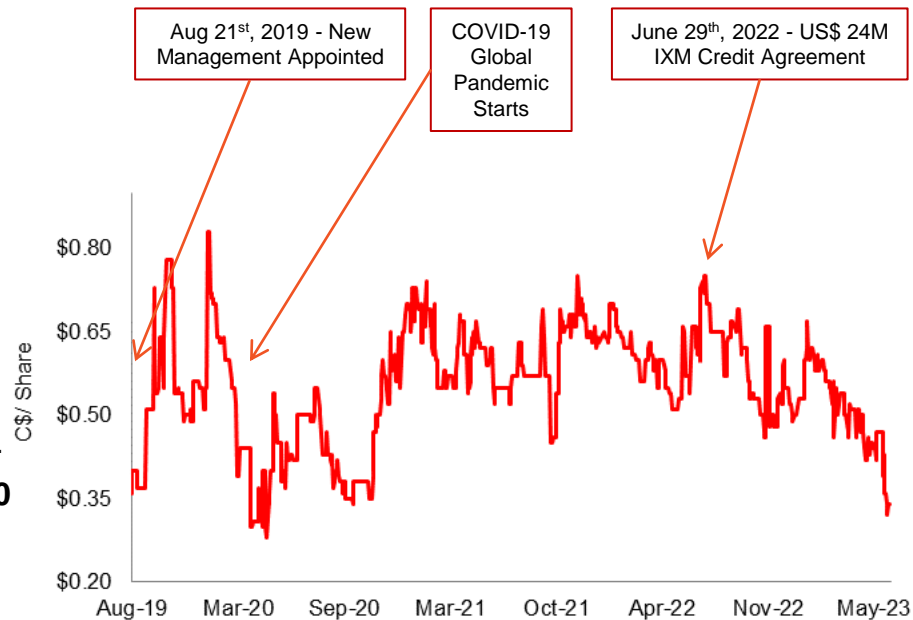
- ▣ **May 2023: Private Placement of C\$2,036,100**
 3,772,200 Units (50c share, 75c 3-year warrant)
 250,000 FT Units (60c share, 75c 3-year warrant)
- ▣ **June 2022: Project Debt Financing:**
 US\$24 million Credit Agreement with Geneva based IXM S.A.
- ▣ **Oct 2021: Fancamp Private Placement of C\$1,550,000**
 2,348,485 Common Shares subscribed at 66c
- ▣ **May 2020: Private Placement of C\$1,150,000:**
 3,833,333 Units (30c share, 50c 2-year warrant)
 130% over-subscribed by 2,166,667 Units (C\$650,000)

Capitalization Summary

Shares Issued	24,048,943
Warrants ¹	4,041,974
RSUs	138,739
Options	2,295,000
Total Shares (fully-diluted)	30,524,656

- Exercisable to purchase one common share of EDM at a price of C\$0.75 until May 2, 2026

Share Price Performance



Source: Bloomberg Financial Markets

Environmental, Social and Governance Framework

- ✓ Environmental Framework:
 - ❑ Environmental Permits in place
 - ❑ Low additional land impact due to existing brownfields operations
 - ❑ Power from Nova Scotia Electrical Grid
 - ❑ hydro, tidal, wind
 - ❑ Site water treatment
 - ❑ Existing facilities and water management controls
 - ❑ Solar, Wind, Compressed Natural Gas for reduction of emissions
 - ❑ Low risk of environmental failure

- ✓ Social Framework:
 - ❑ Community awareness programs
 - ❑ Community Liaison Committee (“CLC”)
 - ❑ First Nations engagement
 - ❑ Strong Government support
 - ❑ Nova Scotia Suppliers and Contractors
 - ❑ Diversity of Employment

- ✓ Governance Framework:
 - ❑ Independent Board of Directors
 - ❑ Operated by experienced mining professionals
 - ❑ Corporate Governance Manual with existing internal controls to promote transparency and leadership accountability



SCOTIA MINE PERMITS & APPROVALS

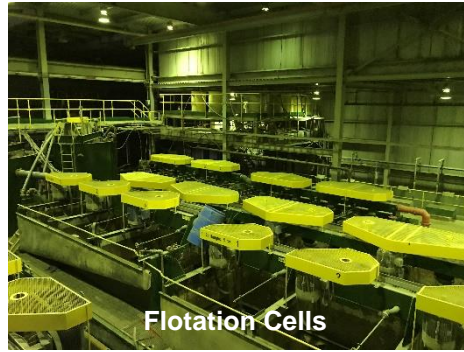
Existing

COMMON NAME	NUMBER (if applic.)	FUNCTION	GRANTING AUTHORITY	STATUS	DATE GRANTED	EXPIRY
Environmental Assessment Approval - Main Mine Area	N/A	Environmental Review	Nova Scotia Environment (Then NS Dept. of Environment & Labour)	Approval In Effect	2000-08-14	No Expiry
Environmental Assessment Approval - Southwest Expansion	N/A	Environmental Review	Nova Scotia Environment	Approval In Effect	2011-10-07	2024-09-09* *date by which project (ie, the project within the SW Expansion Area) commencement is required.
Industrial Approval - Scotia Mine	2006-055136-05	Operating Permit - ScoZinc Mine	Nova Scotia Environment	Approval In Effect.	2017-02-23	2027-02-23
Industrial Approval - Sheet Harbour Bulk Solids Handling Facility	2007-057986-04	Operating Permit - Sheet Harbour Bulk Solids Handling Facility	Nova Scotia Environment	Approval In Effect.	2017-11-01	2027-11-01
Mineral Lease 10-1	10-1	Required prior to the development of a mine	Nova Scotia Department of Energy and Mines (Then Department of Natural Resources)	In Good Standing	2010-04-02	2030-04-02
Mineral Lease 12-1	12-1, ("40058" in NovaROC system)	Required prior to the development of a mine	Nova Scotia Department of Energy and Mines (Then Department of Natural Resources)	In Good Standing	2013-10-02	2033-10-02
Mineral Lease 12-2	12-2, ("40059" in NovaROC system)	Required prior to the development of a mine	Nova Scotia Department of Energy and Mines (Then Department of Natural Resources)	In Good Standing	2013-10-02	2033-10-02

All permit and approval information has been prepared and updated by EDM staff



Open-pit



Flotation Cells



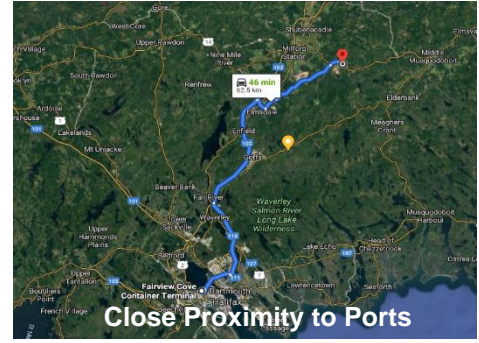
All Season Access Roads



Mill Building



Thickener



Close Proximity to Ports



Grinding Circuit



Tailing Storage Facility



Polishing Pond

Scotia Mine Existing Assets



On-site Nova Scotia Power



Warehouse & Workshop



Warehouse Inventory



Administration Buildings



Core Storage Facility



Ancillary Equipment



Weigh-bridge



Core Prep Building



Warehouse Spares

EDM RESOURCES INC.

Head Office:

1959 Upper Water Street
Suite 1301, Tower 1
Halifax, Nova Scotia
Canada, B3J 3N2

Site Office:

#15601 Highway 224
Cooks Brook
Nova Scotia
Canada, B0N 2H0

Telephone:

(+1) 902 482 4481

Email:

info@EDMresources.com

Web Site:

www.EDMresources.com



Tier 1 Canadian Turnkey Operation